

Background Information

Demographic Data

Number of Children and Young Adults: 2002

	NUMBER	PERCENT
Total state population	4,107,183	100%
Total young adults ages 18–24	429,425	10%
Total children under age 18	979,163	24%

Race and Hispanic Origin of Young Adults (ages 18–24): 2002

	NUMBER	PERCENT
White*	252,718	59%
Black/African American*	147,191	34%
American Indian/Alaskan Native*	1,635	less than 0.5%
Asian*	4,978	1%
Native Hawaiian/Other Pacific Islander*	233	less than 0.5%
More than one race*	3,738	1%
Hispanic/Latino	18,932	4%

*Non-Hispanic

Child Health

	STATE	NATIONAL
Children without health insurance: 2001	9%	12%
2-year-olds who were immunized: 2002	81%	79%

Economic Conditions of Families

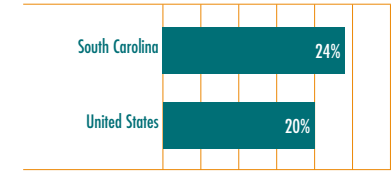
	STATE	NATIONAL
Median income of families with children: 2001	\$46,100	\$51,100
Children in extreme poverty (income below 50% of poverty level): 2001	11%	7%
Female-headed families receiving child support or alimony: 2001	36%	35%

Education

	STATE	NATIONAL
4th grade students who scored below basic reading level: 2003	41%	38%
8th grade students who scored below basic reading level: 2003	31%	28%
4th grade students who scored below basic math level: 2003	21%	24%
8th grade students who scored below basic math level: 2003	32%	33%

Vulnerable Youth

Number of persons ages 15–19 in foster care: 2001	1,315
Number of mothers under age 20: 2002	15,487
Number of juveniles detained, incarcerated, or placed in residential facilities: 2001	1,398
Percent of 18- to 24-year-olds in poverty: 2002	

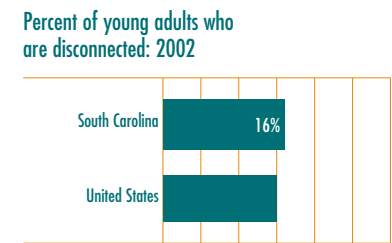


Disconnected Young Adults

Disconnected young adults are persons ages 18–24 who

- are not enrolled in school
- are not working
- have no degree beyond high school

Number of young adults who are disconnected: 2002	61,000
---	--------



South Carolina

SC

Overall Rank [46]

Indicators*	Percent Change from 1996 to 2001										Trend Data		National Rank		
	W O R S E					ZERO	B E T T E R					1996	2001	<i>National Rank is based on 2001 figures</i>	
Percent low-birthweight babies 1996–2001						4						STATE NATIONAL	9.2 7.4	9.6 7.7	[47]
Infant mortality rate (deaths per 1,000 live births) 1996–2001						6						STATE NATIONAL	8.4 7.3	8.9 6.8	[46]
Child death rate (deaths per 100,000 children ages 1–14) 1996–2001							30					STATE NATIONAL	37 26	26 22	[38]
Rate of teen deaths by accident, homicide, and suicide (deaths per 100,000 teens ages 15–19) 1996–2001						6						STATE NATIONAL	72 60	68 50	[42]
Teen birth rate (births per 1,000 females ages 15–17) 1996–2001							18					STATE NATIONAL	39 33	32 25	[42]
Percent of teens who are high school dropouts (ages 16–19) 1996–2001						0						STATE NATIONAL	11 10	11 9	[35]
Percent of teens not attending school and not working (ages 16–19) 1996–2001	22										STATE NATIONAL	9 9	11 8	[41]	
Percent of children living in families where no parent has full-time, year-round employment 1996–2001							13					STATE NATIONAL	31 28	27 25	[36]
Percent of children in poverty (data reflect poverty in 1995 and 2000) 1996–2001							28					STATE NATIONAL	25 21	18 16	[34]
Percent of families with children headed by a single parent 1996–2001						3						STATE NATIONAL	31 27	30 28	[36]

*See Definitions and Data Sources, page 188.

▨ Patterned bars indicate national change.

■ Solid bars indicate state change.